

R O W A N



Barra

By Sarah Dallas



Barra

by Sarah Dallas



SIZES

S	M	L	XL	XXL	
To fit bust					
81-86	91-97	102-107	112-117	122-127	cm
32-34	36-38	40-42	44-46	48-50	in

YARN

Felted Tweed Aran

A Dk Violet 738	B Glade 733	C Plum 731	D Burnt 722		
12	13	14	16	16	x 50gm
1	1	1	1	1	x 50gm
7	8	9	10	10	x 50gm
1	1	1	1	1	x 50gm

NEEDLES

- 1 pair 4mm (no 8) (US 6) needles
- 1 pair 5mm (no 6) (US 8) needles

BUTTONS - 5

TENSION

18 sts and 22 rows to 10 cm measured over patterned st st using 5mm (US 8) needles.

BACK

Using 4mm (US 6) needles and yarn C cast on 110 [118: 130: 142: 154] sts.

Row 1 (RS): K2, *P2, K2, rep from * to end.

Row 2: P2, *K2, P2, rep from * to end.

These 2 rows form rib.

Break off yarn C and join in yarn D.

Using yarn D work in rib for 2 rows.

Break off yarn D and join in yarn B.

Using yarn B work in rib for 2 rows more, dec [inc: dec: dec: dec] 1 st at end of last row and ending with RS facing for next row. 109 [119: 129: 141: 153] sts.

Change to 5mm (US 8) needles.

Beg and ending rows as indicated and repeating the 26 st patt rep 3 [3: 4: 5: 5] times across each row, using the **fairisle** technique as described on the information page and repeating the 30 row patt rep throughout, cont in patt from chart for back, which is worked entirely in st st beg with a K row, as folls:

Cont in patt until back meas 61 [62: 63: 64: 65] cm, ending with RS facing for next row.

Shape armholes

Keeping patt correct, cast off 5 sts at beg of next 2 rows.

99 [109: 119: 131: 143] sts.

Cont straight until armhole meas 25 [26: 27: 28: 29] cm, ending with RS facing for next row.

Shape shoulders and back neck

Next row (RS): Cast off 10 [12: 13: 15: 17] sts, patt until there are 24 [27: 30: 34: 37] sts on right needle and turn, leaving rem sts on a holder.

Work each side of neck separately.

Dec 1 st at neck edge of next 3 rows, ending with RS facing for next row, **and at same time** cast off 10 [12: 13: 15: 17] sts at beg of 2nd row.

Cast off rem 11 [12: 14: 16: 17] sts.

With RS facing, rejoin yarns to rem sts, cast off centre 31 [31: 33: 33: 35] sts, patt to end.

Complete to match first side, reversing shapings.

LEFT FRONT

Using 4mm (US 6) needles and yarn C cast on 55 [59: 63: 71: 75] sts.

Row 1 (RS): K2, *P2, K2, rep from * to last st, K1.

Row 2: K1, P2, *K2, P2, rep from * to end.

These 2 rows form rib.

Break off yarn C and join in yarn D.

Using yarn D work in rib for 2 rows.

Break off yarn D and join in yarn B.

Using yarn B work in rib for 2 rows more, dec 2 [1: 0: 2: 0] sts evenly across last row and ending with RS facing for next row. 53 [58: 63: 69: 75] sts.

Change to 5mm (US 8) needles.

Beg and ending rows as indicated and repeating the 26 st patt rep twice across each row, using the **fairisle** technique as described on the information page and repeating the 30 row patt rep throughout, cont in patt from chart for left front, which is worked entirely in st st beg with a K row, as folls:

Cont in patt until 12 rows less have been worked than on back to beg of armhole shaping, ending with RS facing for next row.

Shape front slope

Keeping patt correct, dec 1 st at end of next and foll 2 [1: 2: 1: 2] alt rows, then on 1 [2: 1: 2: 1] foll 4th rows.

49 [54: 59: 65: 71] sts.

Work 3 [1: 3: 1: 3] rows, ending with RS facing for next row.

Shape armhole

Keeping patt correct, cast off 5 sts at beg and dec 1 [0: 1: 0: 1] st at end of next row. 43 [49: 53: 60: 65] sts.

Dec 1 st at front slope edge **only** on 4th [2nd: 4th: 2nd: 4th] and every foll 4th row until 31 [36: 40: 46: 51] sts rem.

Cont straight until left front matches back to beg of shoulder shaping, ending with RS facing for next row.

Shape shoulder

Cast off 10 [12: 13: 15: 17] sts at beg of next and foll alt row.

Work 1 row.

Cast off rem 11 [12: 14: 16: 17] sts.

RIGHT FRONT

Using 4mm (US 6) needles and yarn C cast on 55 [59: 63: 71: 75] sts.

Row 1 (RS): K3, *P2, K2, rep from * to end.

Row 2: P2, *K2, P2, rep from * to last st, K1.

These 2 rows form rib.

Break off yarn C and join in yarn D.

Using yarn D work in rib for 2 rows.

Break off yarn D and join in yarn B.

Using yarn B work in rib for 2 rows more, dec 2 [1: 0: 2: 0] sts evenly across last row and ending with RS facing for next row. 53 [58: 63: 69: 75] sts.

Change to 5mm (US 8) needles.

Beg and ending rows as indicated and repeating the 12 st patt rep 4 [4: 5: 5: 6] times across each row, using the **fairisle** technique as described on the information page and repeating the 18 row patt rep throughout, cont in patt from chart for

right front, which is worked entirely in st st beg with a K row, as folls:

Complete to match left front, reversing shapings.

LEFT SLEEVE

Using 4mm (US 6) needles and yarn C cast on 50 [54: 54: 54: 58] sts.

Work in rib as given for back for 2 rows.

Break off yarn C and join in yarn D.

Using yarn D work in rib for 2 rows.

Break off yarn D and join in yarn B.

Using yarn B work in rib for 2 rows more, inc [dec: inc: inc: dec] 1 st at end of last row and ending with RS facing for next row. 51 [53: 55: 55: 57] sts.

Change to 5mm (US 8) needles.**

Beg and ending rows as indicated and repeating the 12 st patt rep 4 times across each row, using the **fairisle** technique as described on the information page and repeating the 18 row patt rep throughout, cont in patt from chart for left sleeve, which is worked entirely in st st beg with a K row, as folls:

Inc 1 st at each end of 3rd [3rd: 3rd: next: next] and every foll 4th [4th: 4th: 4th: alt] row to 77 [83: 89: 99: 63] sts, then on every foll 6th [6th: 6th: -: 4th] row until there are 87 [91: 95: -: 103] sts, taking inc sts into patt.

Cont straight until sleeve meas 45 [46: 47: 47: 47] cm, ending with RS facing for next row.

Shape top

Place markers at both ends of last row.

Work 6 rows, ending with RS facing for next row.

Cast off.

RIGHT SLEEVE

Work as given for left sleeve to **.

Beg and ending rows as indicated and repeating the 26 st patt rep 1 [2: 2: 2: 2] times across each row, using the **fairisle** technique as described on the information page and repeating the 30 row patt rep throughout, cont in patt from chart for right sleeve, which is worked entirely in st st beg with a K row, as folls:

Complete to match left sleeve.

MAKING UP

Press as described on the information page.

Join both shoulder seams using back stitch, or mattress stitch if preferred.

Button band

Using 4mm (US 6) needles and yarn C cast on 5 sts.

Row 1 (RS): K2, P1, K2.

Row 2: (K1, P1) twice, K1.

These 2 rows form rib.

Cont in rib until band, when slightly stretched, fits up left front opening edge, up left front slope and across to centre back neck, ending with RS facing for next row.

Cast off in rib.

Slip stitch band in place.

Mark positions for 5 buttons on this band - first to come 23 cm up from lower edge, last to come just below beg of front slope shaping, and rem 3 buttons evenly spaced between.

Buttonhole band

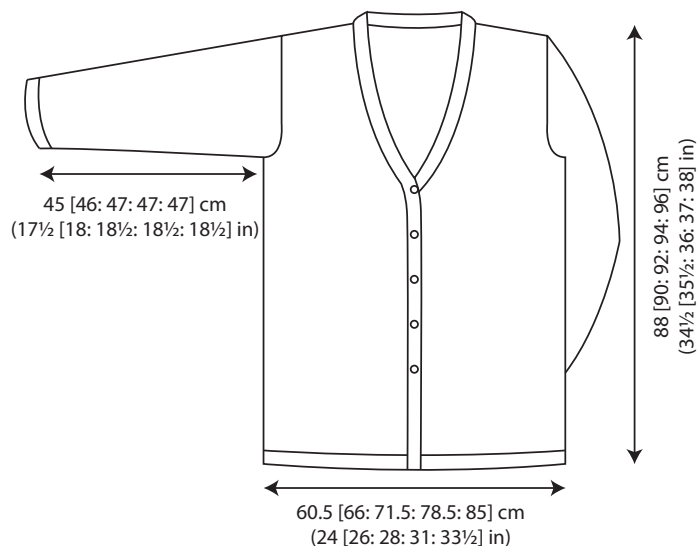
Work to match button band with the addition of 5 buttonholes worked to correspond with positions marked for buttons as folls:

Buttonhole row (RS): K1, K2tog tbl, yfwd (to make a buttonhole), K2.

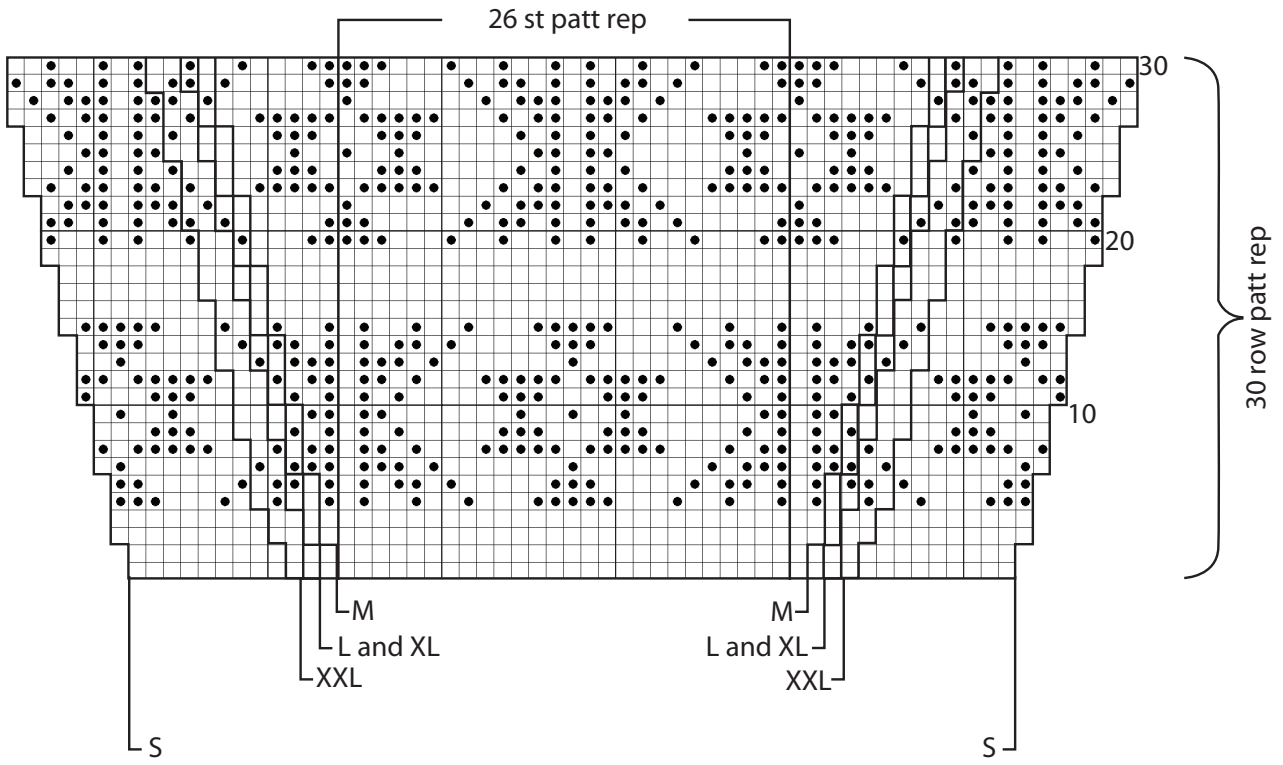
When band is complete, ending with RS facing for next row, cast off in rib.

Slip stitch this band in place, joining cast-off ends of bands at centre back neck.

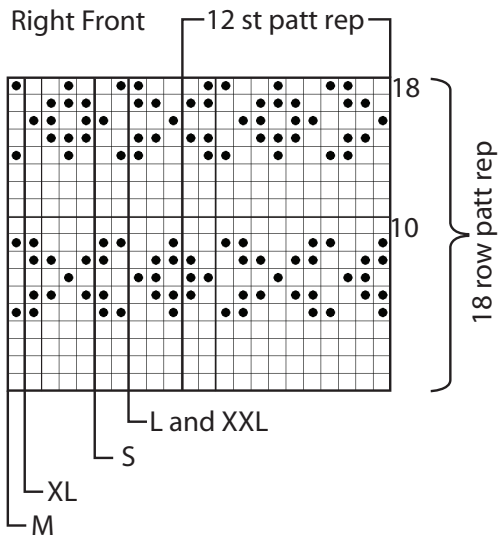
See information page for finishing instructions, setting in sleeves using the square set-in method.



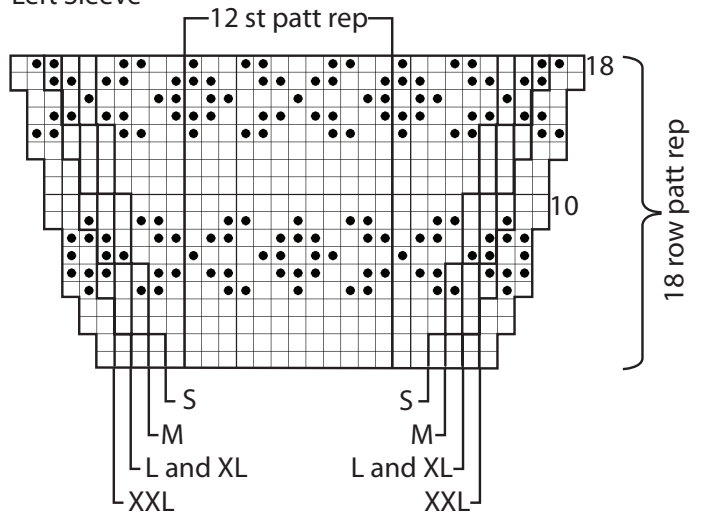
Right Sleeve



Right Front



Left Sleeve



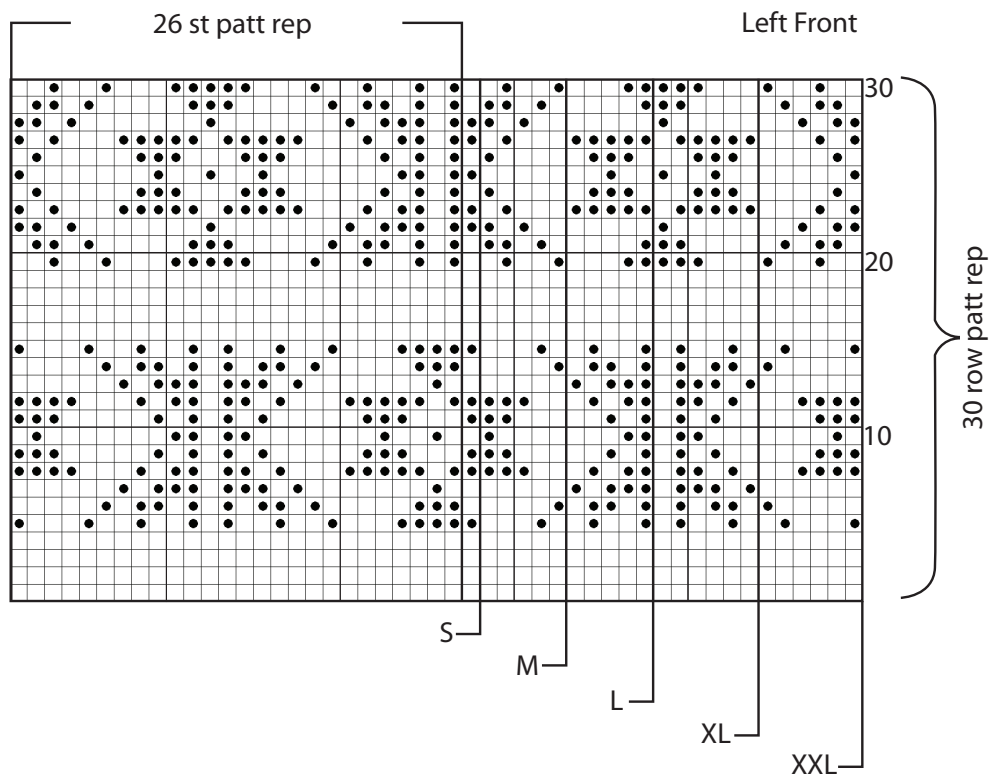
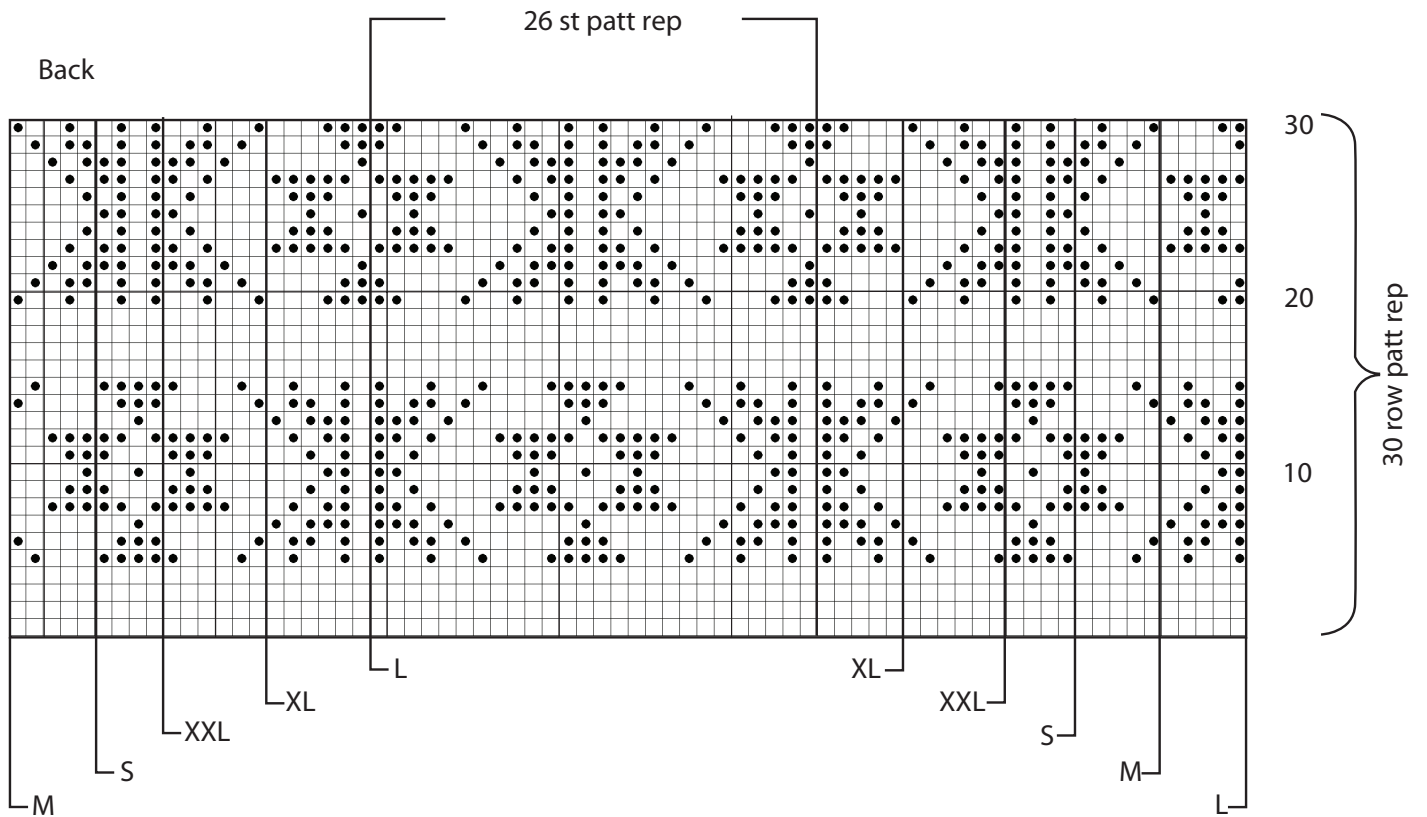
key



K on RS, P on WS using yarn A



K on RS, P on WS using yarn C



All right reserved. Reproduction in whole or any part of all material, including illustrations, in this publication is strictly forbidden. No part may be reproduced, stored in a retrieval system, or transmitted in any form or by any means electronic, electrostatic, magnetic tape, mechanical, photocopying, recording or otherwise without prior permission of the copyright owners having been given in writing.
The designs in this publication are copyrighted and must not be knitted for re-sale. Reproduction of this publication is protected by copyright and is sold on the condition that it is used for non commercial purposes. Yarn quantities are approximate as they are based on average requirements. Colour reproduction is as close as printing will allow.

First published in Great Britain 2012 by Coats Crafts UK LTD Green Lane Mill, Holmfirth, West Yorkshire, England, HD9 2DX E-mail: mail@knitrowan.com Web: www.knitrowan.com © Copyright Coats 2012

R O W A N 